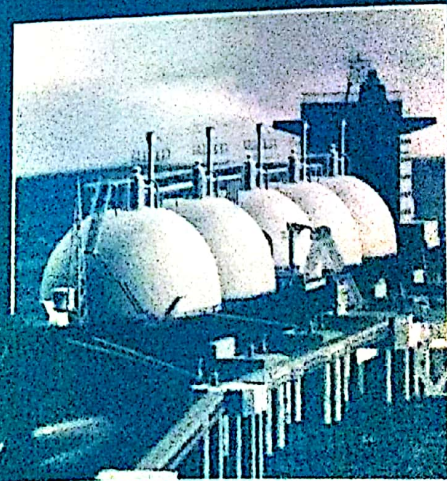
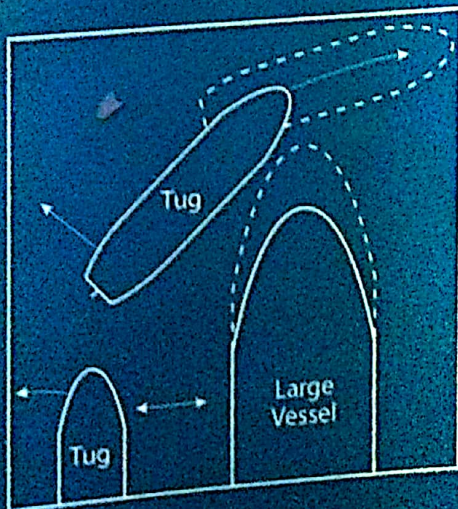
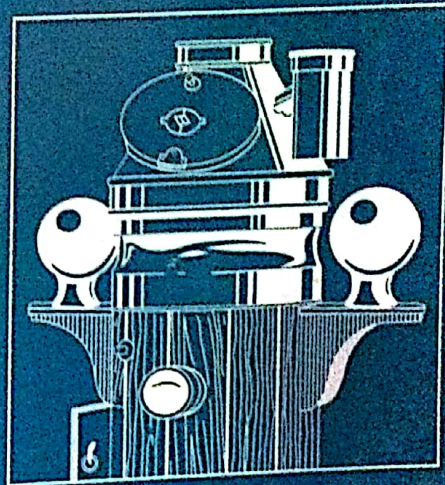
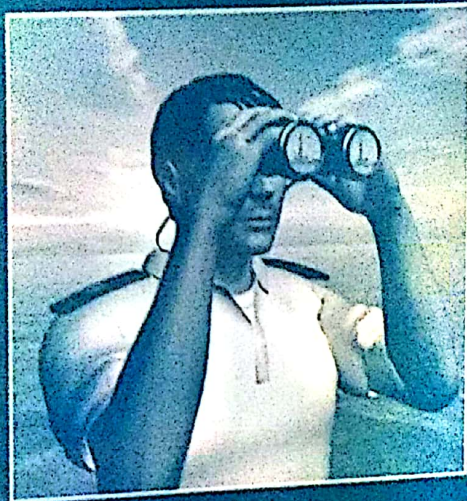
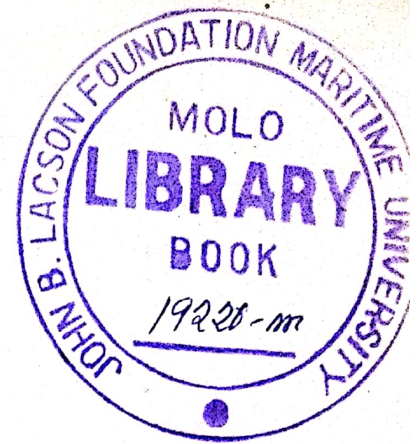


SEAMANSHIP NOTES



BY ANGUS FERGUSON

628.82
F132
Q110
C-1
MARINE

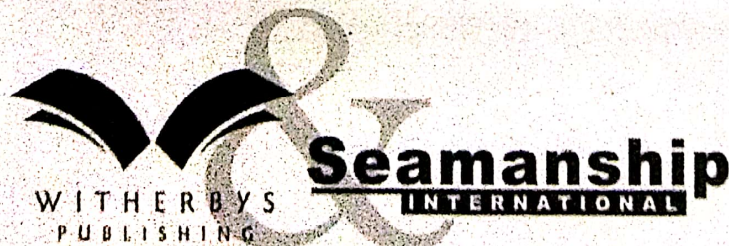


Witherby Seamanship International Ltd.

SEAMANSHIP NOTES

Angus Ferguson
Lecturer Glasgow College of Nautical Studies

A Witherby Seamanship Publication



First published 2004 Reprinted 2006, 2008, 2010

Printed & bound in Great Britain by Bell & Bain Ltd. Glasgow

Published by: Witherby Seamanship International Ltd,
4 Dunlop Square, Deans Estate, Livingston,
West Lothian, EH54 8SB

Tel: +44 (0) 1506 463 227 Fax: +44 (0) 1506 468 999

Email: info@emailws.com Web: www.witherbyseamanship.com

© Witherby Seamanship International Ltd, 2010

All rights reserved. No part of this publication may be reproduced, stored in a retrieval system, or transmitted in any form or by any means, electronic, mechanical, photocopying, recording or otherwise, without the prior permission of the publishers.

Although great care has been taken with the writing and production of this publication, neither Witherby Seamanship International Ltd nor the author can accept any responsibility for any errors, omissions or their consequences.

This publication has been prepared to deal with the subject of Seamanship. This should not however, be taken to mean that this publication deals comprehensively with all of the issues that will need to be addressed or even, where a particular issue is addressed, that this publication sets out the only definitive view for all situations.

The opinions expressed are those of the author only and are not necessarily to be taken as the policies or views of any organisation with which he has any connection.

ISBN 0-9534379-6-5

ISSUE 5

CONTENTS

SECTION ONE: NAVIGATION

Voyage Planning	11
Ship Reporting Schemes	13
Ship Routeing Schemes	14
Admiralty Publications	15
Admiralty List of Radio Signals Contents	16
Statutory Publications	18
Weekly Notices to Mariners	19
Annual Summary of Admiralty Notices to Mariners	20
World Wide Navigational Warning Service	22
The Azimuth Mirror	23
Errors of the Sextant	24
The Sextant	25
Meteorological Instruments	26
Weather Systems	27
Weather Systems Definitions	28
Action in a Tropical Revolving Storm	30
Characteristics of a Tropical Revolving Storm	31
Watchkeeping Principles	32
Contents of Bridge Procedures Guide	33
Watchkeeping Duties at Sea Chart	34
Watchkeeping Duties Under Pilotage	35
Watchkeeping Preparation for Sea	36
Watchkeeping in Port and at Anchor	37
Autopilot and Steering Control Systems	40
Steering Control Systems	41
AIS	44
ECDIS and RCDS	46
GPS	47
Parallel Indexing	48
Radar	49
Radar and ARPA	50
Voyage Data Recorders	52
Gyro Compass	53
Gyro Compass Associated Equipment	54
Magnetic Compass	55
Anchoring Procedures	57
Effect of the Wind and Current	58
Interaction - Bank Effect	59
Standing Moor	60
Running Moor	61
Berthing	62
Heavy Weather	64
Interaction - Ship to Ship	65
Squat	67
Interaction - Use of Tugs	68
Turning Short Round	69

SECTION TWO - RESPONSE TO EMERGENCIES

Action in the Event of Collision	73
Damage Assessment	74
Action in the Event of flooding	75
Action in the Event of Grounding	76
IAMSAR	77
IAMSAR Contents	78
Emergencies in Port	79
International Code of Signals	80
Organisation of Fire Parties and Drills	81
Person Overboard	82
Person Overboard Ship Manoeuvres	83
Proceeding to a Distress	85
Protection of Passengers	86
Protection of the Marine Environment	87
Search and Rescue Organisations	88
Search Patterns	89
Search Patterns Illustrated	90
Emergency Towing Arrangements	92
Receipt of a Distress Message	93
Ship Position Reporting Systems	94
Action in the Event of Steering Gear Failure	95
Cargo Ship Fire Fighting Regulations	96
Care of Fire Fighting Appliances	98
Action in the Event of Fire	100
Classes and Chemistry of Fire	101
Escape and Breathing Apparatus	102
Fire and Safety Plans	103
Passenger Ship Fire Fighting Regulations	104
SCBA Checks	106
Shutdown and Isolation of Equipment	107
Contents of SOLAS Manual	109
Search and Rescue Transponders and Hand-Held Radios	110
GMDSS	112
EPIRBS	113
Immersion Suits and Thermal Protective Aids	114
Launching of Survival Craft	116
Markings on LSA Equipment	118
Pyrotechnics	119
Recovery of the Rescue Boat	121
Passenger Ship LSA Regulations Built After July 1998	122
Cargo Ship LSA Regulations Built After July 1998	124
Cargo Ship LSA Regulations Built Before July 1986	126
Passenger Ship LSA Regulations Built Before 1986	128
Passenger Ship LSA Regulation Built Between 1986 and 1998	130
Cargo Ship LSA Regulations Built Between 1986 and 1998 Class VII	132
Medical Information	134

SECTION THREE: SHIPBOARD OPERATIONS

International Safety Management Code	137
International Ship Port Facilities Security Code	138
Risk Assessment	141
Safety Officials	142
SOPEP Manual	143
STCW 95	144
MARPOL	146
Special Areas	150
IALA Systems of Buoyage	152

ANNEXES

MSN 1781 (M+F)	The Merchant Shipping (Distress Signals and Prevention of Collisions) Regulations 1996 (36 pages)
MGN 040	International Safety Management (ISM) Code (17 pages)
MGN 71	Musters training and decision making (13 pages)

BIBLIOGRAPHY